

# Rapid Deployment Unit

The Rapid Deployment Structures are suitable for heights from 6m to 60m, with variety antenna configurations, with relatively small ground footprint and disturbance.

Cost effective design of the product secures quick delivery, rapid deployment and low ongoing and inspection cost.

## Specification

### Design

Analysis and member design in accordance with ANSI TIA or Eurocodes as required.

### Construction & materials

Tube and angle steel construction with bolted connections. Mild or high yield steel members as required or specified.

All members hot dipped galvanised as standard and/or finished with protective paint coating systems as required.

### Foundations options:

- Cast in-situ reinforced concrete
- Pre-cast reinforced concrete
- Hot dip galvanised steel grillage

### Compound

Work & Equipment shelter

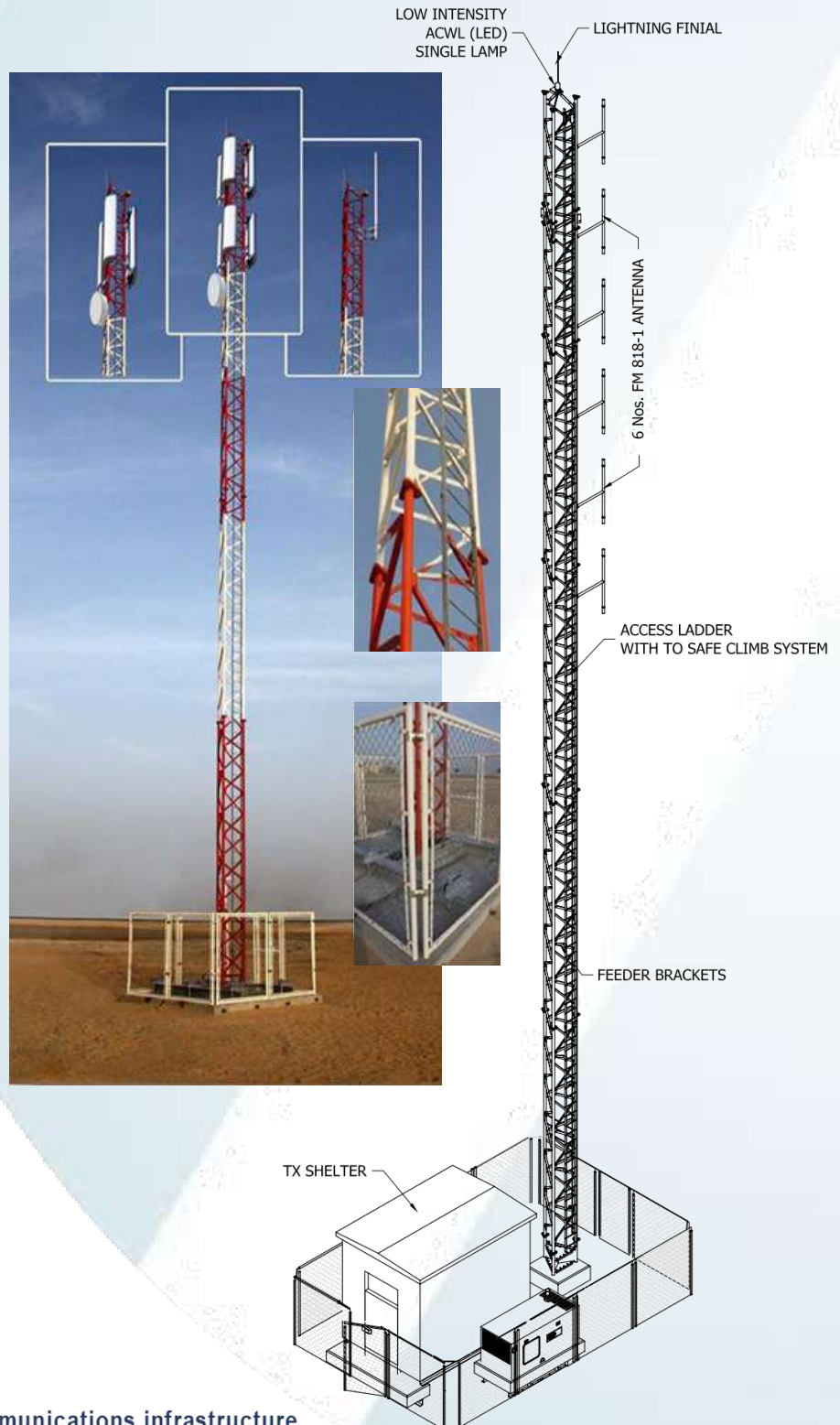
Equipment cabinets

Security fencing

Power & Lighting

### Accessories

- Aircraft Warning light system - ICAO compliant
- Paint system – Red & White banding, ICAO compliant
- Lightning protection—IEC/BS EN 62305 compliant
- Access ladder and feeder brackets— Internally mounted, galvanised steel
- Fall arrest system



## JAGGARD

Global leaders in broadcast and communications infrastructure